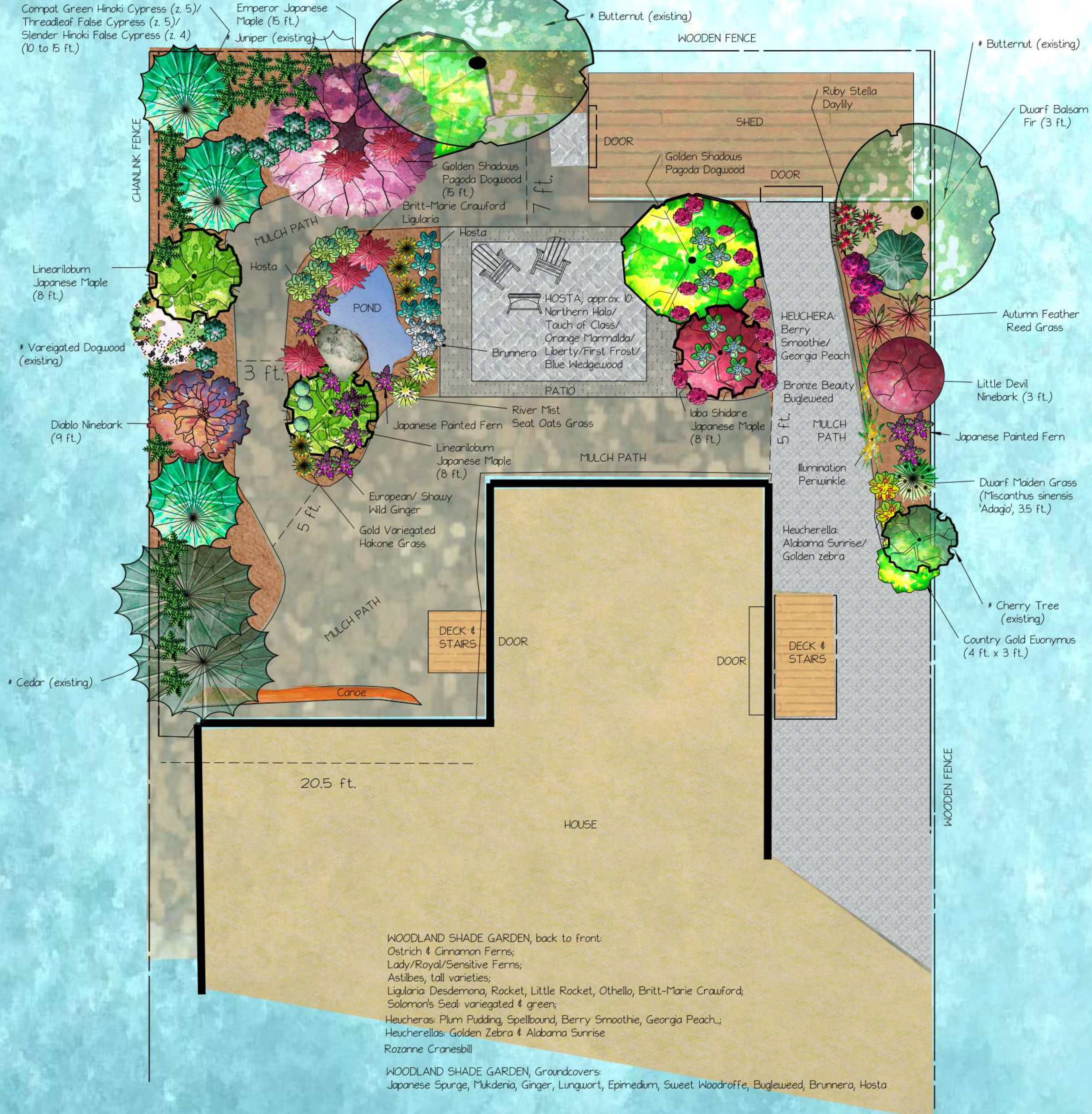


Compat Green Hinoki Cypress (z. 5)/
Threadleaf False Cypress (z. 5)/
Slender Hinoki False Cypress (z. 4)
(10 to 15 ft.)

Emperor Japanese
Maple (15 ft.)
* Juniper (existing)

* Butternut (existing)

* Butternut (existing)

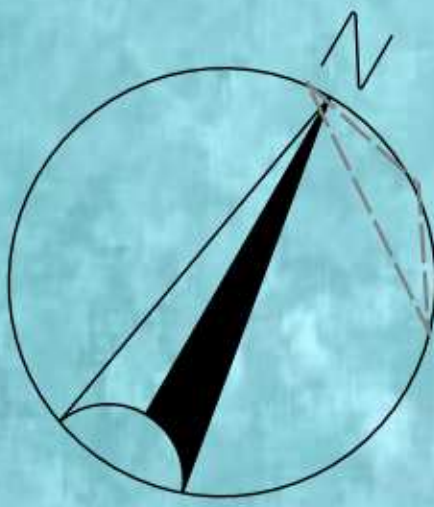


WOODLAND SHADE GARDEN, back to front:
Ostrich & Cinnamon Ferns;
Lady/Royal/Sensitive Ferns;
Astilbes, tall varieties;
Ligularia: Desdemona, Rocket, Little Rocket, Othello, Britt-Marie Crawford;
Solomon's Seal: variegated & green;
Heucheras: Plum Pudding, Spellbound, Berry Smoothie, Georgia Peach.;
Heucherellas: Golden Zebra & Alabama Sunrise
Rozanne Cranesbill

WOODLAND SHADE GARDEN, Groundcovers:
Japanese Spurge, Mukdenia, Ginger, Lungwort, Epimedium, Sweet Woodroffe, Bugleweed, Brunnera, Hosta

HOSTA:
Large to tiny 'Mause Ears';
thicker leaves are slug resistant; e.g.,
Blue/Earth Angel, Big Daddy, First Frost, Liberty, Great Expectations, Sagae, Touch of Class, Paradigm, Regal Splendor, Royal Standard, Abiqua Drinking Gourd

COPYRIGHT: GARDEN by DESIGN, 2012



| | | |
|----------|------------------|--------------|
| client: | Ottawa ON | |
| scale | 1" to 4' | date |
| drawn by | Garden by Design | checked by |
| | | Karin Banerd |
| | | revision |
| | | ver. 5 |
| | | drawing # |
| | | 1309-2012 |